

# D.\_Paroka\_2.pdf

*by*

---

FILE	D._PAROKA_2.PDF (1.3M)	WORD COUNT	4451
TIME SUBMITTED	06-NOV-2019 09:35PM (UTC+0700)	CHARACTER COUNT	21981
SUBMISSION ID	1208283776		

## PREDICTION OF SHIP TURNING MANEUVERS IN CONSTANT WIND AND REGULAR WAVES

Daeng Paroka<sup>1\*</sup>, Andi Haris Muhammad<sup>2</sup>, Syamsul Asri<sup>1</sup>

11

<sup>1</sup>*Department of Naval Architecture, Faculty of Engineering, Hasanuddin University, Gowa Campus, Jl. Poros Malino Km. 6, 92171, South Sulawesi, Indonesia*

<sup>2</sup>*Department of Marine Engineering, Faculty of Engineering, Hasanuddin University, Gowa Campus, Jl. Poros Malino Km. 6, 92171, South Sulawesi, Indonesia*

37

(Received: April 2016 / Revised: March 2017 / Accepted: April 2017)

### ABSTRACT

47

A ship usually performs maneuvers under the influence of external forces and moments, such as wind, waves, and current. Therefore, it is important to understand the maneuvering behavior of ships under the action of external forces. This paper discusses the turning maneuvers of an Indonesian ro-ro ferry under the combined influence of constant wind and regular waves using the mathematical modelling group (MMG). The ship's position relative to the wave trough is added to the original MMG model to estimate the existing forces and moment induced by the waves. The results of a numerical simulation show that the effect of wave height on turning ability is more significant for a small wavelength; this effect decreases as the wavelength increases. The effect of wavelength on the sway force and yaw moment is more significant compared with its effect on the surge force. The ship's initial position relative to the wave trough does not have a significant effect on the turning characteristic and it can be neglected for the present study's subject ship. Overall, the results of the present work compare well with published data.

*Keywords:* Maneuvering; Turning; Waves; Wind

### 1 INTRODUCTION

The maneuvering performance of a ship during the initial design stage is typically predicted in calm water conditions. However, ships usually maneuver in the presence of external forces, such as wind, waves, and current. Therefore, it is important to understand the maneuvering behavior of a ship under the combined actions of the environmental forces.

Some mathematical models for predicting the maneuvering of a ship in conditions of wind and waves have been developed by several authors. Fang et al. (2005) used a 6 degree of freedom (6 DOF) nonlinear mathematical model to simulate a ship's turning maneuver in waves by taking into account the effect of the wave encounter frequency on the inertia, damping, and linear hydrodynamic derivative of the forces and moments acting on the ship's hull. A similar approach was used by Zipfel and Maksoud (2011) to determine a ship's maneuvering motion in regular waves. The frequency-dependent hydrodynamic coefficients were transferred to the time-domain using the impulse response function. A unified seakeeping and maneuvering theory with second-order regular waves was proposed by Skejic and Faltinsen (2008) to analyze the behavior of a ship in waves. Here, the wave drift force was estimated using a two-time scale

15

\*Corresponding author's email: dparoka@eng.unhas.ac.id, Tel: +62-411-586262, Fax: +62-411-586015  
Permalink/DOI: <https://doi.org/10.14716/ijtech.v8i3.3704>

model to separate the low-frequency motion (maneuvering motion) and the high-frequency motion (seakeeping motion). The same method for estimating the wave drift force was used by Seo and Kim (2011) to predict ship maneuvering in waves using a combination between the mathematical modelling group (MMG) and seakeeping mathematical model. The second-order wave force was also used by Chroni et al. (2015) to investigate the effect of environmental forces on ship maneuvering with a 4 degree freedom (4 DOF) mathematical model. Skejic (2013) also used the second-order wave force to simulate ship maneuvering in irregular waves. However, the two-time scale method seems to be inefficient because the solution to the seakeeping motion can be obtained after the maneuvering motion has been solved.

The most practical method for predicting the maneuvering behavior of a ship in the initial design stage may be the MMG model because empirical formulas for estimating the coefficients of the hydrodynamic derivatives have been developed (Yoshimura & Masumoto, 2012). Even the original MMG model is a pure maneuvering motion problem with a 3 DOF mathematical model; some researchers included the roll or heeling effect using a 4 DOF model. Fujiwara et al. (2016) and Paroka et al. (2015) used the MMG model to investigate the steady state equilibrium of a ship maneuvering in wind and waves.

The discrepancy between the MMG model and the previously mentioned methods is the encounter frequency of forces and moments induced by the ship's hull. In cases of long wavelengths in which the length of the wave is larger than the length of the ship, some authors neglected the effect of the encounter frequency on hydrodynamic forces and moments induced by the ship's hull, although it was taken into account for the forces and moments induced by the waves (Munif & Umeda, 2000; Umeda & Hashimoto, 2002). Munif and Umeda (2000) showed that with long waves, the heave and pitch motion may not be significant. Following this assumption, the MMG model seems to be able to predict the turning characteristics of ships in waves. However, it is necessary to add a mathematical equation to the MMG model to describe the ship's position relative to the wave. This is important because the forces and moments induced by the wave depend on the ship's position in the wave surface.

This paper discusses the turning maneuverability of a small Indonesian ro-ro ferry under the combined action of wind and waves using the modified MMG model. The effect of the characteristics of the waves, such as wave height, wavelength, and the initial position of the ship relative to the wave, was investigated. For small ships, these wave characteristics may have a significant effect on the maneuvering performance as indicated by Fang et al. (2005). The wind velocity is assumed to be constant and to be uncorrelated with the wave characteristics.

## 2 RESEARCH METHODOLOGY

To describe the present mathematical model, two coordinate systems are used as shown in Figure 1. The first coordinate system,  $O-x_0y_0z_0$ , is fixed on the calm water surface and is used to describe the coordinates of the ship's position and wave propagation, respectively. The second coordinate system,  $G-xyz$ , has its origin on the ship's center of gravity,  $G$ , and moves with the ship's motion. The symbols  $u$ ,  $v$ , and  $r$  indicate the surge, sway, and yaw velocities, respectively. The drift angle is designated by  $\beta$ , and  $\delta$  is used for the rudder angle. The propeller thrust is indicated by  $T_j$  and the heading angle is indicated by  $\psi$ . The angle of the wave direction  $\psi_w$  is assumed to be the same as the wind angle.



$$X_W = -\alpha \rho g \zeta_W k \cos \chi \int_{AE}^{FE} C_1(x) S(x) e^{-kd(x)/2} \times \sin(k(\xi_G + x \cos \chi)) dx \tag{5}$$

$$Y_W = \rho g \zeta_W k \sin \chi \int_{AE}^{FE} C_1(x) S(x) e^{-kd(x)/2} \times \sin(k(\xi_G + x \cos \chi)) dx + \zeta_W \omega \omega_e \sin \chi \int_{AE}^{FE} \rho S_y(x) e^{-kd(x)/2} \times \sin(k(\xi_G + x \cos \chi)) dx - \zeta_W \omega u \sin \chi \times [\rho S_y(x) e^{-kd(x)/2} \cos(k(\xi_G + x \cos \chi))]_{AR}^{FE} + (1 + a_H) \frac{\rho}{2} A_R f_a \varepsilon_R (1 - w_p) u \sqrt{1 + \kappa_p \frac{8K_T}{\pi J^2} v_{WR}} \tag{6}$$

$$N_W = \rho g \zeta_W \sin \chi \int_{AE}^{FE} C_1(x) S(x) e^{-kd(x)/2} \times x \sin(k(\xi_G + x \cos \chi)) dx + \zeta_W \omega \omega_e \times \sin \chi \int_{AE}^{FE} \rho S_y(x) e^{-kd(x)/2} x \sin(k(\xi_G + x \cos \chi)) dx + \zeta_W \omega u \sin \chi \int_{AE}^{FE} \rho S_y(x) e^{-kd(x)/2} \times \cos(k(\xi_G + x \cos \chi)) dx - \zeta_W \omega u \sin \chi \times [\rho S_y(x) e^{-kd(x)/2} x \cos(k(\xi_G + x \cos \chi))]_{AE}^{FE} + (x_R + a_H x_H) \frac{\rho}{2} A_R f_a \varepsilon_R (1 - w_p) u \sqrt{1 + \kappa_p \frac{8K_T}{\pi J^2} v_{WR}} \tag{7}$$

Here,  $\alpha$  is the correction factor dependent on the block coefficient, and  $\zeta_W$ ,  $k$ ,  $S(x)$ , and  $d(x)$  are the wave amplitude, wave number, area, and draught of section at a longitudinal distance  $x$  from the midship, respectively. The symbols  $\omega$ ,  $\omega_e$ , and  $S_y(x)$  indicate the wave frequency, wave encounter frequency, and added mass of section in the sway direction, while  $x_R$ ,  $x_H$ ,  $a_H$ , and  $A_R$  are the longitudinal position of the rudder from the midship, the longitudinal position of the center of the interaction force between the hull and the rudder, the interaction factor between the hull and the rudder, and the rudder area, respectively. The rudder coefficient is indicated by  $f_a$  and the effective propeller wake fraction is designated by  $w_p$ . The symbols  $\varepsilon_R$ ,  $\kappa_p$ ,  $J$ , and  $K_T$  are the wake ratio between propeller and rudder, the interaction factor between propeller and rudder, the advance coefficient, and the thrust coefficient, respectively.  $C_1(x)$  and  $v_{WR}$  are calculated using Equation 8 and Equation 9, respectively.

$$C_1(x) = \frac{\sin(k \sin \chi \cdot B(x)/2)}{(k \sin \chi \cdot B(x)/2)} \tag{8}$$

$$v_{WR} = \zeta_W \omega \sin \chi \exp(-kz_R) \cos(2\pi \xi_G/\lambda + kx_R \cos \chi) \tag{9}$$

Here,  $B(x)$ ,  $z_R$ , and  $\lambda$  are the breadth of section, the center of the rudder from the baseline, and the wavelength, respectively.

The wind forces and moments in the surge, sway, and yaw directions are calculated using the empirical formula proposed by Fujiwara et al. (2006). The angle of wind attack is determined by the wind direction and the ship heading angle. The wave angle is assumed to be the same as the wind angle.

### 2.1. Ship Data

The ship used in the numerical simulation is an Indonesian roro ferry with the principle dimensions shown in Table 1. The dimensions of the propeller and the rudder are shown in Table 2.

4  
Table 1 Principle dimensions of the subject ship

Items	Dimension
Length overall ( $L_{OA}$ )	36.40 m
Length between perpendicular ( $L_{BP}$ )	31.50 m
Breadth ( $B$ )	8.70 m
Height ( $H$ )	2.65 m
Draught ( $T$ )	1.65 m
Ship speed ( $V_S$ )	10.5 knot
Lateral projected windage area ( $A_L$ )	36.40 m <sup>2</sup>
Transverse projected windage area ( $A_F$ )	93.61 m <sup>2</sup>
Lateral projected area of superstructure ( $A_{OD}$ )	187.21 m <sup>2</sup>
Center of windage area from midship ( $C$ )	-0.558 m
Vertical center of $A_L$ ( $H_C$ )	0.720 m
Vertical center of $A_{OD}$ ( $H_I$ )	4.930 m
Height of transverse projected area ( $H_{BR}$ )	10.73 m

1  
Table 2 Propeller and rudder dimensions

Items	Dimension
Number of propellers	2
Number of propeller blades ( $Z$ )	4
Propeller diameter ( $D_P$ )	1.10 m
Propeller revolution ( $n$ )	8.58 rps
Transverse position propeller ( $y_P$ )	$\pm 2.55$ m
Longitude position propeller ( $x_P$ )	15.50 m
Rudder area ( $A_R$ )	2.08 m <sup>2</sup>
Rudder coefficient ( $f_A$ )	2.10
Transverse rudder position ( $y_R$ )	$\pm 2.55$ m
Longitude rudder position ( $x_R$ )	15.75 m

### 3. RESULTS

The numerical results of the turning maneuver simulation for a wave height of 0.50 m and 0.75 m are shown for a wavelength that is the same as the ship's length (Figure 2a) and for a wavelength of 50.0 m (Figure 2b). The wind velocity for all wave characteristics is 6.75 m/s (Beaufort scale 4). The turning diameter decreases as the wave height increases. The distance between the first and the second turning circles is longer for a larger wave height. A similar result is obtained for a larger wavelength. The distance of the turning circle movement becomes smaller as the wavelength increases. These results show that the wave height has a more significant effect on the ship turning maneuver for a shorter wavelength compared with a longer wavelength.

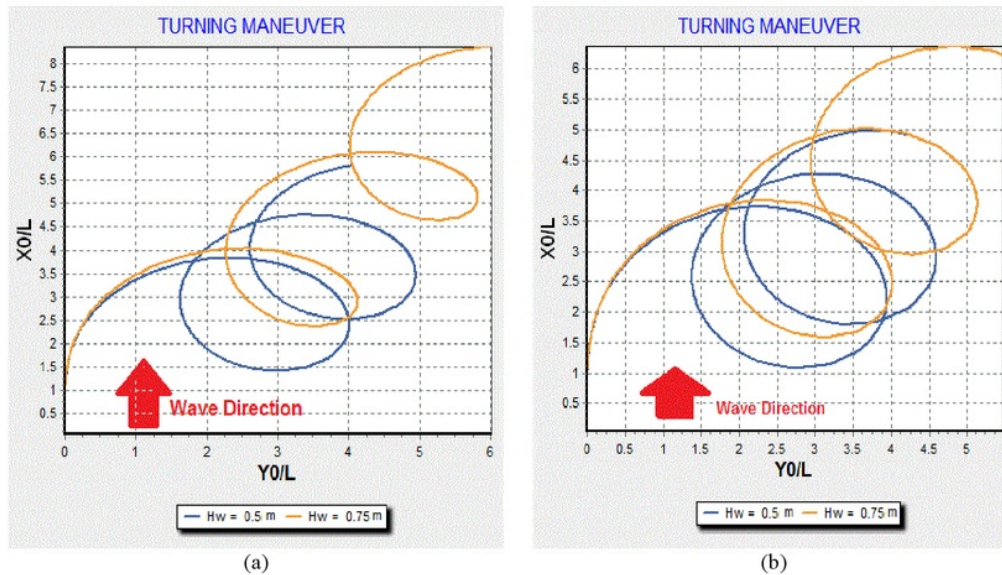


Figure 2 Trajectory of the turning circle: (a) Wavelength is the same as the ship's length; and (b) Wave length is 50.00 meters

The surge and sway velocities of the ship during the turning simulation are shown in Figure 3a for a wavelength that is the same as the ship's length for a wave height of 0.50 m and 0.75 m. The results for a wavelength of 50.0 m with the same wave heights are shown in Figure 3b. The yaw rates for a wavelength that is the same as the ship's length for the same wave heights are shown in Figure 3c, while Figure 3d shows the results for a wavelength of 50.0 m. The surge and sway velocities oscillate depending on the angle of the wave encounter relative to the ship heading angle. The minimum velocity occurs when there is a heading wave in which the angle of the wave encounter is 0.0 degrees, while the maximum velocity occurs in following wave in which the angle of the wave encounter is 180.0 degrees. The oscillation of the surge, sway, and yaw motions also occur in all conditions of wave height and wavelength. These are purely affected by the ship's position relative to the wave. The oscillation of the surge velocity becomes significant in heading and following waves, while the oscillation of the sway velocity becomes significant in beam seas. Therefore, the phase between the surge and sway motions becomes 90.0 degrees as shown in Figures 3a and 3b.

An alteration in surge velocity when the ship is in following waves and heading waves significantly increases as the wave height increases. However, the effect of wave height on the alteration in surge velocity decreases as the wavelengths increase. The same trend is also obtained for the sway velocity. The yaw rate is more sensitive to the alteration in wave direction compared with the surge and sway velocities. This is because the yaw moment exists even in beam seas depend on the position of longitudinal center of gravity. The minimum yaw rate will occur in following and heading waves, although this condition appears in a very short time in case of a turning maneuver.

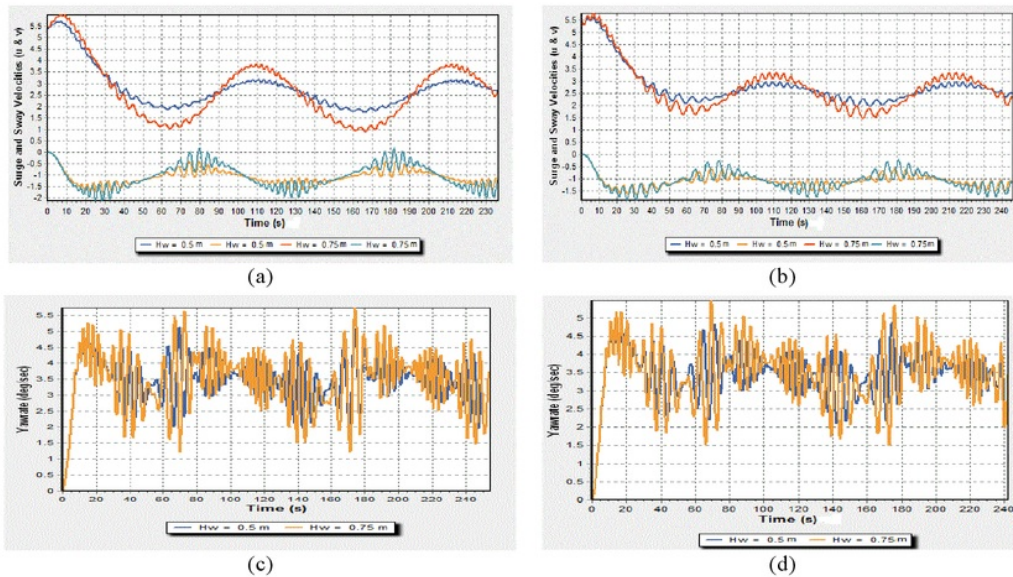


Figure 3 Ship motion during a turning maneuver: (a) Surge and sway velocities for wavelength the same as ship's length; (b) Surge and sway velocities for wave length of 50.00 meters; (c) Yaw rate for wavelength the same as ship's length; (d) Yaw rate for wavelength of 50.00 meters

Figures 4a to 4f show the nondimensional forces and moments in the surge, sway, and yaw directions at two different wave heights and two different wavelengths. The figures on the left are for a wavelength that is the same as the ship's length, and the figures on the right are the forces and moments for a wavelength of 50.0 m. The effect of wavelength on the force in the surge direction is not significant compared with its effect on the force in the sway direction and on the moment in the yaw direction. Therefore, the characteristic of turning trajectory significantly changes as the wavelength increases for the same wave height. The wave height significantly affects the forces and moments for a wavelength of 50.0 m. However, the effect of wave height on the forces and moments tends to decrease as the wavelength increases. Similar to the sway velocity, the force in the sway direction is negligibly small in heading and following waves, although it reaches its maximum in beam seas. The same trend is obtained for the surge force when the angle of the wave encounter is 90.0 degrees and 270.0 degrees (beam waves). The minimum value of the yaw moment occurs in cases of heading and following waves. The yaw moment is still significant in a beam wave because of the effect of the longitudinal center of buoyancy.

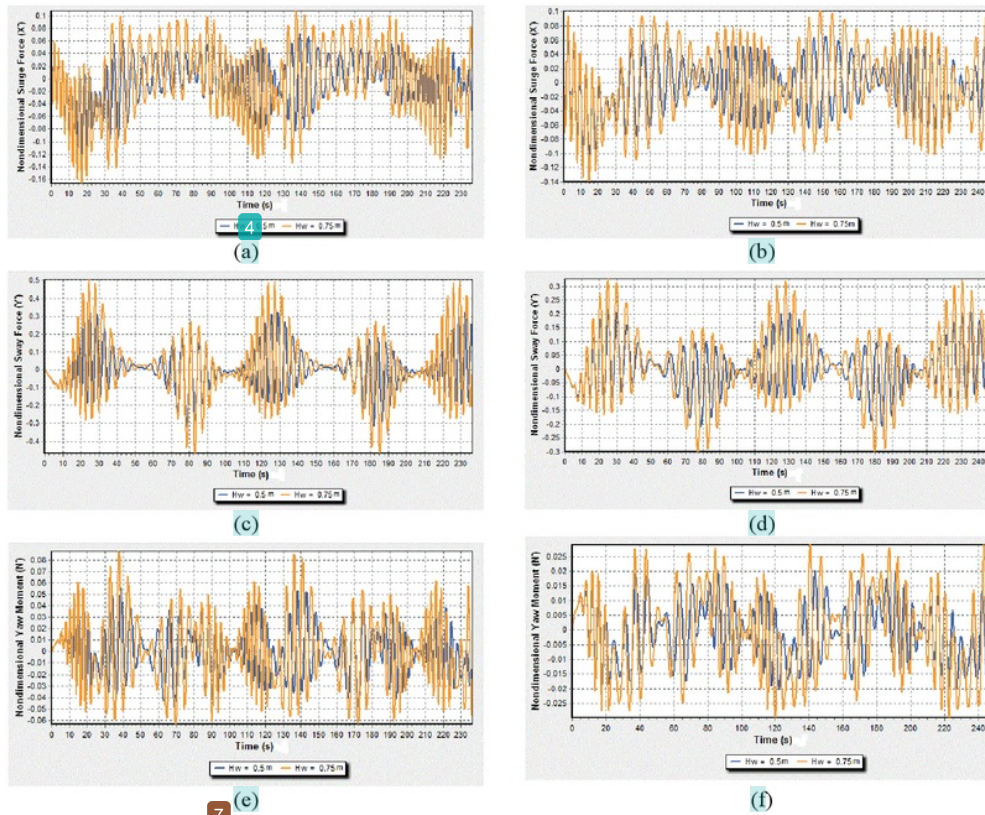


Figure 4 Resultant forces and moments acting on a ship hull during a turning maneuver: (a) Surge force for wavelength the same as the ship's length; (b) Surge force for wavelength of 50.00 meters; (c) Sway force for wavelength the same as the ship's length; (d) Sway force for wavelength of 50.00 meters; (e) Yaw moment for wavelength the same as the ship's length; (f) Yaw moment for wavelength of 50.00 meters

#### 4. DISCUSSION

The obtained turning trajectory for two different wave heights and wavelengths are similar to the results found in previous studies (Fang et al., 2005; Seo & Kim, 2011; Skejck, 2013; Chroni et al., 2015). The turning circle becomes smaller as the wave height increases for both a wavelength that is the same as the ship's length and a wavelength of 50.0 m. The turning circle for a shorter wavelength is larger than for a larger wavelength. This indicates that the drift motion significantly increases when the wave height increases and decreases as the wavelength increases. Figure 3 shows that the surge velocity is minimum in beam seas, which produces a maximum sway velocity. The yaw moment tends to increase when the wave slope increases. As result, the turning motion for a large wave slope is faster than with a small wave slope. These turning motion characteristics also induce a longer distance of movement between the first turning circle and the second turning circle as shown in Figure 2.

Fang et al. (2005) showed that the oscillations of both the surge and sway velocities depend on the angle of the wave encounter relative to the ship heading angle. The same results are obtained in the present study. A more significant amplitude of oscillation of the surge and sway velocities has also been identified in the transition from following waves to beam seas and from beam waves to heading waves and so on. This phenomenon did not appear in a study conducted

by Fang et al. (2005). Skjick (2013) had similar results as this study for a ship turning in irregular waves. This phenomenon may depend on the wave characteristics compared with the ship geometry. Thus, it may not occur in cases of large ships compared with the wave height, although it may be seen in small ships even for a small wave height as seen in this study. Figures 3a and 3b show that the oscillation due to the transition from following waves to beam waves and so on decreases when the wavelength increases. It may disappear for smaller wave slopes.

The initial position of a ship relative to the wave does not have a significant effect on the turning maneuvers of a ship in waves. The same results were obtained by Fang et al. (2005), although they stated that the effect of the initial position relative to the wave may be significant for small ships. This effect is not obtained in the present study. The initial position of a ship relative to the wave surface does not significantly affect the forces and moments induced by the wave during a turning maneuver. The initial position only makes the changing phase of the forces and moments. Therefore, its effect on the turning maneuver becomes negligibly small.

The subject ship cannot perform a turning maneuver in a wave height of 1.0 m when the wavelength is the same as the ship's length or is smaller. The numerical simulation can be conducted for a wave height of 1.0 m when the wavelength is longer than the ship. However, the turning circle becomes very small and it seems to be unrealistic from a practical point of view. The very small turning circle occurs due to the large drift motion with a small surge velocity in beam seas up to heading waves during the turning simulation. The large drift motion may occur due to the small draught of the subject ship so that the hydrodynamic damping force in the sway direction becomes smaller compared with a ship with a larger draught. This was shown by Chroni et al. (2015) using a wavelength that was half the ship's length, a wave height of 5.50 m, and a wind velocity of 19.0 m/s (Beaufort scale 8). The subject ship used in their simulation was larger than that used in the present study. These facts show that the required weather conditions to perform a sea trial of small ships should be smaller than that in the guidance of the International Maritime Organization (IMO, 2002).

## 5. CONCLUSION

The mathematical model for predicting a ship's turning maneuver in constant wind and regular waves has been developed based on the 3 DOF of the MMG model. In order to directly calculate wave forces and moment, an equation to describe the ship's position relative to the wave profile as a function of the surge and sway velocities, as well as the heading angle has been included in the MMG model. The present mathematical model can be simultaneously solved to obtain the maneuvering characteristics. Based on the numerical results for a small Indonesian ro-ro ferry, some conclusions can be made as follows: (1) The effect of the wave height on a ship's turning maneuver is more significant for a short wavelength. This effect decreases as the wavelength increases; (2) The sway force and yaw moment of a wave significantly decrease when the wavelength increases. Alteration of the surge force due to an increasing wavelength is smaller compared with the sway force and yaw moment. This means that the drift motion may have an important role on ship maneuvering for short wavelengths; (3) The initial position of a ship relative to the wave does not have a significant effect on the ship's turning maneuver; its effect can be neglected in the subject ship of the present study.

## 6. ACKNOWLEDGEMENT

This paper is part of research that is supported by Hasanuddin University and the Directorate General of Higher Education under grant number 1764/UN4.20/PL.09/2015. The authors express their gratitude to both institutions for their support. The authors also express their

sincere gratitude to PT. Indonesia Ferry (Persero) for its support in providing the ship data used in this paper.

## 7. REFERENCES

- Carlton, J.S., 2007. *Marine Propellers and Propulsion, Second Edition*. Elsevier Ltd., Jordan Hill, Oxford, UK., pp. 103–106
- Chroni, D., Liu, S., Plessas, T., Papanikolaou, A., 2015. Simulation of the Maneuvering Behaviour of Ships under the Influence of Environmental Forces. *In: Proceedings of the 16<sup>th</sup> International Congress of the International Maritime Association of the Mediterranean (IMAM 2015) 2015, Pula, 21-24 September, Croatia*
- Fang, M.C., Luo, J.H., Lee, M.L., 2005. A Nonlinear Mathematical Model for Ship Turning Circle Simulation in Waves. *Journal of Ship Research*, Volume 49, pp. 69–79
- Fujiwara, T., Ueno, M., Ikeda, Y., 2006. Cruising Performance of a Large Passenger Ship in Heavy Sea. *In: Proceedings of the 16<sup>th</sup> International Offshore and Polar Engineering Conference 2006, California, 28 May–2 June, USA*
- Holtrop, J., Mennen, G.G.J., 1982. An Approximate Power Prediction Method. *International Shipbuilding Progress*, Volume 29, pp. 166–170
- IMO, 2002. *Maritime Safety Committee on Ship Maneuverability of International Maritime Organization (IMO)*. MSC &6/23, Resolution MSC 137(36), IMO, London
- Ito, Y., Umeda, N., Kubo, H., 2014. Hydrodynamic Aspects on Vulnerability Criteria for Surf-riding of Ships. *Jurnal Teknologi (Science and Engineering)*, Volume 66, pp. 127–132
- Kijima, K., Katsuno, T., Nakiri, Y., Furukawa, Y., 1990. On the Maneuvering Performance of a Ship with the Parameter of Loading Condition. *Journal Society of Naval Architects of Japan*, Volume 168, pp. 141–148
- Munif, A., Umeda, N., 2000. Modelling Extreme Roll Motions and Capsizing of a Moderate-Speed Ship in Astern Waves. *Journal of Society of Naval Architects of Japan*, Volume 187, pp. 51–58
- Paroka, D., Muhammad, A.H., Asri, S., 2015. Steady State Equilibrium of Ship Maneuvering under Combined Action of Wind and Wave. *Jurnal Teknologi (Science and Engineering)*, Volume 76, pp. 67–75
- Seo, M.G., Kim, Y., 2011. Effect of Ship Motion on Ship Maneuvering in Waves. *In: Proceedings of the 26<sup>th</sup> International Workshop on Water Waves and Floating Bodies 2011, Athens, 17-20 April, Greece*
- Skejck, R., Faltinsen, O.M., 2008. A Unified Seakeeping and Maneuvering Analysis of Ships in Regular Waves. *Journal of Marine Science and Technology*, Volume 13, pp. 371–394
- Skejck, R., 2013. Ships Maneuvering Simulations in a Seaway – How Close are We to Reality. *In: Proceedings of the International Workshop on Next Generation Nautical Traffic Models 2013, Delf, 22 November, Netherlands*
- Umeda, N., Hashimoto, H., 2002. Qualitative Aspects of Nonlinear Ships Motion in Following and Quartering Seas with High Forward Velocity. *Journal of Marine Science and Technology*, Volume 6, pp. 111–121
- Yoshimura, Y., 2005. Mathematical Model for Maneuvering Ship Motion (MMG Model). *In: Proceedings of Workshop on Mathematical Model for Operations Involving Ship – Ship Interaction 2005, Tokyo, 4-5 August, Japan*
- Yoshimura, Y., Masumoto, Y., 2012. Hydrodynamic Database and Manoeuvring Prediction Method with Medium-high Speed Merchant Ships and Fishing Vessels. *In: Proceedings of MARSIM 2012, International Conference on Marine Simulation and Ship Maneuverability 2012, Singapore, 23 April, Singapore*

Zipfel, J.S., Maksoud, M.A., 2011. A Numerical Model to Determine Ship Maneuvering Motion in Regular Waves. *In: Proceedings of the International Conference on Computational Methods in Marine Engineering (MARINE) 2011, Lisbon, 28–30 September, Portugal*

ORIGINALITY REPORT

%**25**

SIMILARITY INDEX

%**8**

INTERNET SOURCES

%**22**

PUBLICATIONS

%**6**

STUDENT PAPERS

PRIMARY SOURCES

- 
- |          |  |            |
|----------|--|------------|
| <b>1</b> | Daeng Paroka, Muhammad Fahmi Kamil, Andi Haris Muhammad. "Experimental Study on Automatic Control for Collision Avoidance of Ships", Makara Journal of Technology, 2018<br>Publication | % <b>2</b> |
| <b>2</b> | "Contemporary Ideas on Ship Stability", Springer Nature, 2019<br>Publication   | % <b>2</b> |
| <b>3</b> | Ming-Chung Fang, Jhih-Hong Luo. "On the track keeping and roll reduction of the ship in random waves using different sliding mode controllers", Ocean Engineering, 2007<br>Publication | % <b>2</b> |
| <b>4</b> | Fluid Mechanics and Its Applications, 2011.<br>Publication   | % <b>1</b> |
| <b>5</b> | Submitted to Universitas Indonesia<br>Student Paper  | % <b>1</b> |
| <b>6</b> | eng.unhas.ac.id<br>Internet Source   | % <b>1</b> |
-

- 
- 7 [www.ayocol.itu.edu.tr](http://www.ayocol.itu.edu.tr) Internet Source % 1
- 
- 8 Thet Zaw Htet, Naoya Umeda, Atsuo Maki, Akihiko Matsuda, Daisuke Terada. "Estimation of broaching probability using wave-induced forces and moments measured in captive model tests", Journal of Marine Science and Technology, 2017 Publication % 1
- 
- 9 Wei Zhang, Zao-Jian Zou, De-Heng Deng. "A study on prediction of ship maneuvering in regular waves", Ocean Engineering, 2017 Publication % 1
- 
- 10 [link.springer.com](http://link.springer.com) Internet Source % 1
- 
- 11 Lando, Asiyanthi Tabran, Hirofumi Nakayama, and Takayuki Shimaoka. "Application of portable gas detector in point and scanning method to estimate spatial distribution of methane emission in landfill", Waste Management, 2016. Publication % 1
- 
- 12 Seo, M.G.. "Numerical analysis on ship maneuvering coupled with ship motion in waves", Ocean Engineering, 201112 Publication % 1
- 
- 13 Ming-Chung Fang, Jhih-Hong Luo. "The

nonlinear hydrodynamic model for simulating a ship steering in waves with autopilot system", Ocean Engineering, 2005

Publication

% 1

14

Hirotsada Hashimoto, Akihiko Matsuda, Naoya Umeda. "Broaching prediction in the light of an enhanced mathematical model, with higher-order terms taken into account", Journal of Marine Science and Technology, 2003

Publication

% 1

15

Submitted to Universitas Sultan Ageng Tirtayasa

Student Paper

<% 1

16

Ayaz, Z.. "Manoeuvring behaviour of ships in extreme astern seas", Ocean Engineering, 200612

Publication

<% 1

17

Naoya Umeda, Hirotsada Hashimoto. "Qualitative aspects of nonlinear ship motions in following and quartering seas with high forward velocity", Journal of Marine Science and Technology, 2002

Publication

<% 1

18

Tello Ruiz, Manases, Guillaume Delefortrie, and Marc Vantorre. "Induced wave forces on a ship manoeuvring in coastal waves", Ocean Engineering, 2016.

<% 1

19

"Parametric Resonance in Dynamical Systems",  
Springer Nature, 2012

Publication

<% 1

---

20

Tatsuhiro Mizobe, Yasunori Nihei, Yoshiho Ikeda. "A feasibility study on a new trimaran PCC in medium speed", Journal of Marine Science and Application, 2010

Publication

<% 1

---

21

[www.iwwwfb.org](http://www.iwwwfb.org)

Internet Source

<% 1

---

22

Vishwanath Nagarajan. "Comparison of the mariner Schilling rudder and the mariner rudder for VLCCs in strong winds", Journal of Marine Science and Technology, 02/2008

Publication

<% 1

---

23

Xu, Xin, Jian-Min Yang, Xin Li, and Liangyu Xu. "Hydrodynamic performance study of two side-by-side barges", Ships and Offshore Structures, 2014.

Publication

<% 1

---

24

Renato Skejic. "A unified seakeeping and maneuvering analysis of ships in regular waves", Journal of Marine Science and Technology, 11/2008

Publication

<% 1

---

25 Omer Faruk Sukas, Omer Kemal Kinaci, Sakir Bal. "System-based prediction of maneuvering performance of twin-propeller and twin-rudder ship using a modular mathematical model", *Applied Ocean Research*, 2019

Publication

<% 1

---

26 A. Maimun, A. Priyanto, Rahimuddin, A.Y. Sian, Z.I. Awal, C.S. Celement, Nurcholis, M. Waqiyuddin. "A mathematical model on manoeuvrability of a LNG tanker in vicinity of bank in restricted water", *Safety Science*, 2013

Publication

<% 1

---

27 [shakespir.com](http://shakespir.com)

Internet Source

<% 1

---

28 "Estimation of the maneuvering characteristics of the DTC containership using URANS based simulations", *Maritime Technology and Engineering III*, 2016.

Publication

<% 1

---

29 Welch, Chani, Glenn A. Harrington, and Peter G. Cook. "Influence of Groundwater Hydraulic Gradient on Bank Storage Metrics : Ground Water xx, no. x: xx-xx", *Ground Water*, 2014.

Publication

<% 1

---

30 Muhammad, Andi Haris, Adi Maimun, Omar Yaakob, and Agoes Priyanto. "Effect of Spray-Strake on Patrol Vessel Manoeuvrability",

<% 1

Volume 4 Ocean Engineering Offshore  
Renewable Energy, 2008.

Publication

31

[lowcarbonshipping.co.uk](http://lowcarbonshipping.co.uk)

Internet Source

<% 1

32

[seminar.utmspace.edu.my](http://seminar.utmspace.edu.my)

Internet Source

<% 1

33

Hongxin Wu, Chen Guo, Yingkai Lou. "Chapter 63 CMAC and NISM Integrated Controller for Twin-Rudder Twin-Propeller Ship Course Tracking", Springer Nature, 2018

Publication

<% 1

34

Bruce J. Muga, James F. Wilson. "Dynamic Analysis of Ocean Structures", Springer Nature, 1970

Publication

<% 1

35

Zhang Xiufeng, Jin Yicheng, Yin Yong, Ren Hongxiang, Liu Xiuwen. "Ship motion modeling and simulation in Ship Handling Simulator", 2012 International Conference on Audio, Language and Image Processing, 2012

Publication

<% 1

36

[research-report.umm.ac.id](http://research-report.umm.ac.id)

Internet Source

<% 1

37

Pierre Del Moral, Ajay Jasra, Kody J. H. Law, Yan Zhou. "Multilevel Sequential Monte Carlo

<% 1

# Samplers for Normalizing Constants", ACM Transactions on Modeling and Computer Simulation, 2017

Publication

38

Submitted to iGroup

Student Paper

<% 1

39

Submitted to Universiti Malaysia Terengganu UMT

Student Paper

<% 1

40

Yuanhui Wang, Yulong Tuo, Simon X. Yang, Mohammad Biglarbegian, Mingyu Fu.

"Reliability-based robust dynamic positioning for a turret-moored floating production storage and offloading vessel with unknown time-varying disturbances and input saturation", ISA Transactions, 2018

Publication

<% 1

41

Submitted to University of Newcastle upon Tyne

Student Paper

<% 1

42

[orbit.dtu.dk](http://orbit.dtu.dk)

Internet Source

<% 1

43

[tubdok.tub.tuhh.de](http://tubdok.tub.tuhh.de)

Internet Source

<% 1

44

[ir.library.osaka-u.ac.jp](http://ir.library.osaka-u.ac.jp)

Internet Source

<% 1

45

Marco Sinibaldi, Gabriele Bulian. "Towing simulation in wind through a nonlinear 4-DOF model: Bifurcation analysis and occurrence of fishtailing", Ocean Engineering, 2014

Publication

<% 1

46

Submitted to University of Southampton

Student Paper

<% 1

47

Gianandrea Mannarini, Lorenzo Carelli. "VISIR-1.b: ocean surface gravity waves and currents for energy-efficient navigation", Geoscientific Model Development, 2019

Publication

<% 1

48

Haitong Xu, C. Guedes Soares. "Hydrodynamic coefficient estimation for ship manoeuvring in shallow water using an optimal truncated LS-SVM", Ocean Engineering, 2019

Publication

<% 1

49

Watai, Rafael A., Felipe Ruggeri, and Alexandre N. Simos. "A Time-Domain Boundary Elements Method Applied to Multi-Body Simulations With Large Relative Displacements", Volume 1 Offshore Technology Offshore Geotechnics, 2015.

Publication

<% 1

EXCLUDE QUOTES ON

EXCLUDE ON

BIBLIOGRAPHY

EXCLUDE MATCHES < 5

WORDS